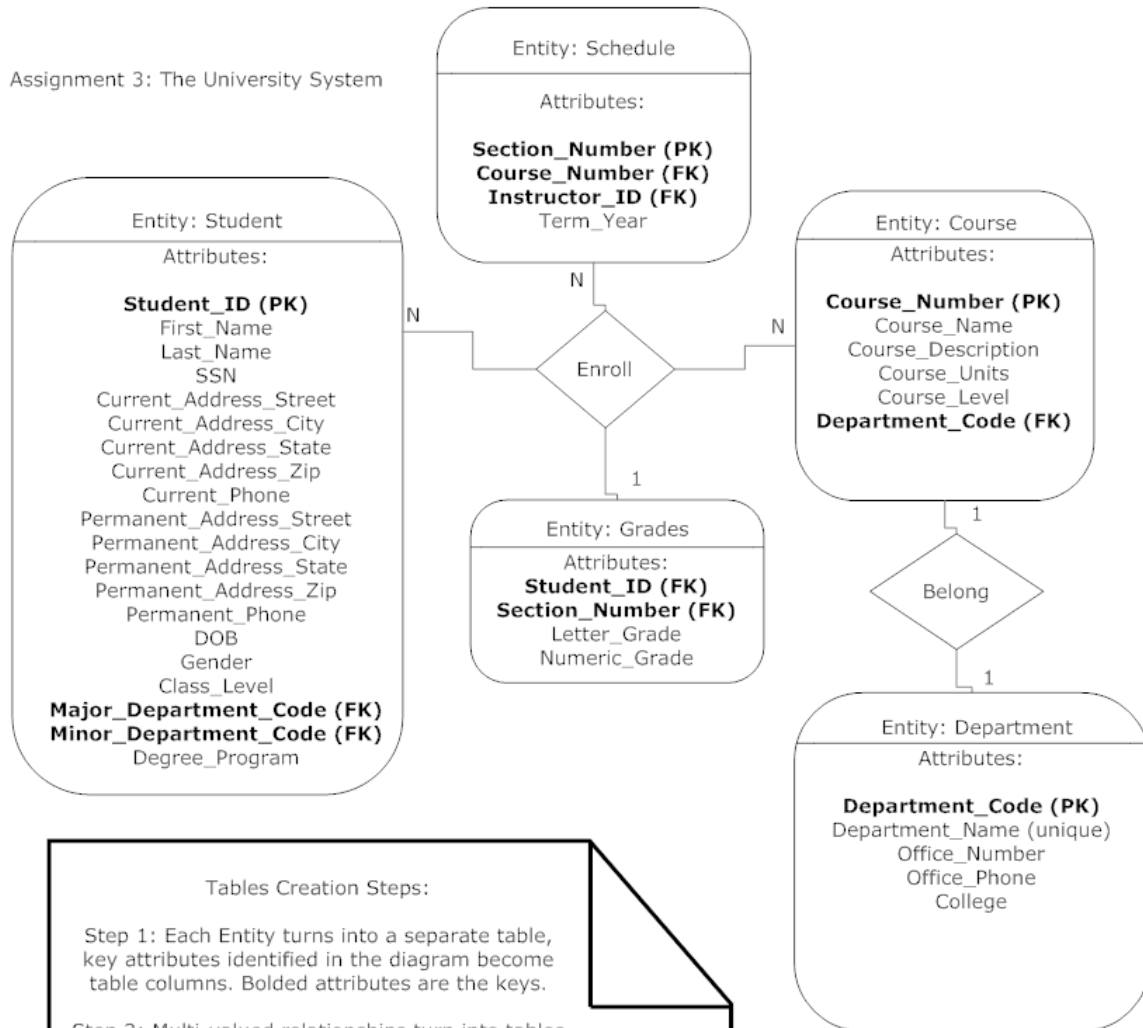


Assignment 3: The University System



Tables Creation Steps:

Step 1: Each Entity turns into a separate table, key attributes identified in the diagram become table columns. Bolded attributes are the keys.

Step 2: Multi-valued relationships turn into tables including the composite keys of the corresponding tables. See new "enrollment" table below.

Step 3: Single valued relationships can be ignored and/or eliminated from the final table list.

New Table Created in Step 2:

